

Production Staff Directory

Shelley Brown

President & CEO

(610) 258-7766 ext. 201

sbrown@statetheatre.org

Kori Lotito

Marketing Manager

Assistant Freddy Coordinator

(610) 258-7766 ext. 244

klotito@statetheatre.org

Mike Healy

Technical Director

(Assistant Facility Manager)

(610) 258-7766 ext. 227

mhealy@statetheatre.org

Natalie Miller

FOH Manager

(FOH, Artist Services, Merchandise)

(610) 258-7766 ext. 202

nmiller@statetheatre.org

Mark Rafinski

VP, Production & Operations

(Technical Advance / Theatre Rentals
/ Settlement)

(610) 258-7766 ext. 211

mrafinski@statetheatre.org

Ruthann Gargone

Box Office Manager

(610) 258-7766 ext. 208

rgargone@statetheatre.org

Dave Caserta

Lighting Designer / Master Electrician

(Hotels, Transportation)

(610) 258-7766 ext. 215

dcaserta@statetheatre.org

Theatre Phone Numbers

Other Theatre Phone Numbers

- Administrative Offices/Main Number: **610-258-7766**
- Fax: **610-258-2570**
- Box Office: **610-252-3132**
- Touring Company's Production Office: **610-258-7766 (ext. 212)**
- Touring Company's Fax Phone Line: **610-991-0550**
- Yellow Cab: **610-258-9141**

Emergency Phone Numbers

- Police, Fire & Rescue: **911**
- St. Lukes Easton Campus Emergency Room **(866)785-8537**
- Patient First Primary and Urgent Care-Easton **(610) 991-3136**

Stage Specifications

Dimensions

Proscenium opening: 47'-11"
Main curtain out trim: 22'-0"
Overall stage depth (including apron) 33'-8"
Apron lip to plaster line 3'-6"
Plaster Line to back wall 30'-2"

Stage Right wing 16'-5 1/2"
Stage Left wing 10'-0"
Out trim of linesets 48'-3"
In trim of linesets 5'-0"
Grid height 50'-0"

Primary Loading Dock

The primary loading dock is a freight elevator with an inside measurement of 13'6" wide x 10'8" deep and a 10,000 lb. capacity. There is a dock leveler at standard dock height of 4'0" which leads to an elevator vestibule (17'5" wide x 8'0" deep). All clearance to stage measures 10' x 10'. It is located on the parking deck ([see directions.pdf](#)) and travels 46' down to stage right.



When you arrive, there is an intercom on the right side of the elevator door inside the vestibule. Press the button to ring the stage.

The secondary loading dock, only used if absolutely necessary, is located up stage left. The door itself is an Overhead rollup door and is 10' x 10'. The door is approximately 2' above the stage deck. There is a 10' wide by 14' long aluminum ramp that lowers by winch to bring equipment to stage level. This ramp stores upright against the overhead door and takes up about 18"; it does not interfere with the operation of any linesets nor does it block the crossover.

Trucks approaching the loading dock pull down the hill behind the building. Another ramp, also controlled by a winch, lowers into the alley at a 90 degree angle to the truck. A truck plate or ramp is then used to get equipment from the truck onto the loading dock. Visiting companies are welcome to use their own ramp for this purpose; it is recommended that the ramp be at least 10' long. Companies traveling without truck ramps will use an in house 16' ramp, or a 6' dance floor ramp depending on the loading height of the truck.

State Theatre Vehicle Parking Directions



-  Drive west on Northampton Street. Turn right (north) onto 5th Street. Turn left onto Church Street.
-  Reverse direction and back up driving east onto the deck in front of the loading dock.

State Theatre Center for the Arts

453 Northampton St.

Easton, PA 18042

(610) 258-7766

Production Directions:

***** For Trucks/Buses:**

After the theatre on the right-corner of 5th and Northampton St. Make RIGHT on 5th St.

Travel north on 5th (*Parking deck entrance on right*) turn LEFT on Church St and stop.

Back up into the Parking Deck straight to the loading dock.

From the East (New Jersey)

- Take 22W to 2nd exit "Lafayette College/Downtown Easton" (after toll bridge in PA.) Turn left onto 3rd St. When you get to the circle go a quarter around and turn right on Northampton St. Continue up the hill (theatre on right) make a right on 5th St.*** On the right side is the entrance to the parking deck only for production and staff.
- Take 78W to "Easton" exit 75. (first exit in PA) Turn right at stop sign onto Morgan Hill Road. Go straight through one stop sign. Bear left at traffic light onto St. John Street. St. John Street becomes 3rd St. When you reach the circle travel three quarters around and turn right on Northampton St. Continue up the hill (theatre on right) make a right on 5th St. ***On the right side is the entrance to the parking deck only for production and staff.

From the West (Allentown/Bethlehem)

- Take 22E to "4th St." exit in Easton. Go straight through the light; make the third right on Northampton St. The theatre is on the corner of 5th and Northampton St. Make right on 5th ***– the entrance to the parking deck is on the right. For production and staff only.
- Take 78E to "Easton" exit 75. Turn left onto Morgan Hill Road. Go straight through one stop sign. Bear left at traffic light onto St. John Street. St. John Street becomes 3rd St. When you reach the circle travel three quarters around and turn right on Northampton St. Continue up the hill (theatre on right) make a right on 5th St.*** On the right side is the entrance to the parking deck only for production and staff.

From the South (Riegelsville/Doylestown)

Take 611N. Turn right at light (in Easton) onto 3rd St. When you get to the circle go three quarters around to Northampton St. Continue up the hill (theatre on right) make a right on 5th St. ***On the right side is the entrance to the parking deck only for production and staff.

Linesets

There are 30 steel linesets available for use by visiting shows. Lineset #2 is operated on stage right ground level and is single purchase. All remaining lines (29) are double purchase and operated from the flyrail, located SR at 16'-0" above deck. The capacity on the battens is 1000 lbs., and there is enough counterweight available to load all of the lines to capacity.

LINESET CHART STATE THEATRE EASTON, PA

Lineset number	3'6" from PL to stage lip then a 6" smoke pocket Distance from plaster line	Usage	Capacity of all linesets 1,000 lbs.
1	1'	Main curtain	Single purchase
2	2'-5"		Single purchase
3	3'-2 3/4"		Double purchase
	I-BEAM		
4	4'-6 3/4"		Double purchase
5	5'-2 1/2"		Double purchase
6	5'-10 1/2"		Double purchase
	I-BEAM		
7	7'-8 3/4"		Double purchase
8	8'-4 3/4"		Double purchase
9	9' 3/4"		Double purchase
10	9'-8 1/2"		Double purchase
11	10'-5"		Double purchase
	I-BEAM		
12	12'-3 1/4"		Double purchase
13	12'-11 1/4"		Double purchase
14	13'-7 1/4"		Double purchase
15	14'-4 3/4"		Double purchase
16	15'-2"		Double purchase
17	15'-10"		Double purchase
	I-BEAM		
18	17'-1"		Double purchase
19	17'-10"		Double purchase
20	18'-6"		Double purchase
21	19'-2"		Double purchase
22	19'-8"		Double purchase
23	20'-5"		Double purchase
24	21' 1/2"		Double purchase
	I-BEAM		
25	23' 1/2"		Double purchase
26	23'-8 1/4"		Double purchase
27	24'-4 1/2"		Double purchase
28	25' 1/4"		Double purchase
29	25'-8 1/4"		Double purchase
	I-BEAM		
30	27'-11 1/2"		Double purchase
31	28'-6 1/2"		Double purchase

Stage Access

The **primary stage door** is located on the parking deck. It has 55 steps down that lead to stage right. This is the most common entrance for production personnel. The **secondary stage door** is located in the back of the building at the bottom of the hill on Church Street.

Access to the stage from the house is located down stage right and the dressing rooms by stairs down stage left. Temporary steps can be added to allow direct access to the stage from the house.

Location of Road Consoles

None of the seats in the house can be removed; the only position to place road consoles is behind the last row of seats; unfortunately, under the balcony (approximately 9'x20' footprint). The distance from this position to the stage is approximately **90'**. The distance of the **cable run from stage** to the back of the house is approximately **200'**.

On stage monitor world may be set up either SR or SL.

Power

Located DSR we have 400 amps for lights and 400 amps for sound – all with cam locks. There is an additional 100 amp service in the SR basement for sound if more power is needed on stage. Details are listed below.

Production Office

The visiting company production office (measuring 14' 3" x 19') is located SR in the expanded wing.

Phone Lines are 610.258.7766 x212 and 610.991.0550 (analog line)

This office also has a sink, counter, mirror, and wardrobe rack so it can be a ground floor alternative star dressing room.

Wireless

There is wireless throughout the backstage area, ask any of the house crew or staff for the password. Hard lines exist in the first floor SL dressing rooms and the SR production office.

Dressing Rooms

The dressing rooms are located SL, one flight of stairs above stage level. There are 13 dressing rooms distributed across three floors. The star dressing room, located on the first floor, is 8' x 20'. It is equipped with a sink, clothes hooks, makeup mirrors, a full-length mirror, a phone, a couch, and refrigerator. Smoking is strictly prohibited in the dressing rooms. Companies with extensive costume needs should inform the Technical Director so that wardrobe racks can be brought into the dressing rooms.

There are no private bathrooms in the dressing rooms. Each floor has one bathroom, and the first and third floors have a shower.

1st Floor Dress Rooms: (4 rooms, 1 bathroom)

- (1) 8'x 20' Main Dressing Room
 - 5 make-up stations with mirrors
 - 1 Sink, Clothes Rack, Phone/Internet, TV, Fridge, Couch, Table
- (2) 8'x 8' Rooms
 - 2 make-up stations with mirrors
 - 1 Sink, Clothes Rack with hat shelf
- (1) 8'x 8' Room
 - 2 make-up stations with mirrors
 - 1 Sink, Clothes Rack with hat shelf
 - Phone and internet lines
- (1) Central Bathroom with toilet, sink, and shower

2nd Floor Dress Rooms: (5 rooms, 1 bathroom, 1 shower stall)

- (4) 8'x 8' Rooms
 - 2 make-up stations with mirrors
 - 1 Sink, Clothes Rack with Hat Shelf
- (1) 16'x 12' Chorus Dressing Room
 - 6 make-up stations with mirrors
 - Clothes Rack, Couch, No Plumbing
- (1) Central Bathroom with toilet
- (1) Central Room with shower

3rd Floor Dress Rooms: (4 rooms, 1 bathroom, 1 shower stall)

(4) 8'x 8' Rooms

–2 make-up stations with mirrors

–1 Sink, Clothes Rack with Hat Shelf

(1) Central Bathroom with toilet

(1) Central Room with shower

Wardrobe / Laundry

The house wardrobe equipment consists of one iron, one ironing board, and a Jiffy steamer. There are two washers and two dryers on the premises. There is also a Laundromat less than one block from the theatre with “Fluff and Fold” service available. Other local laundry facilities are available, as are dry cleaning facilities.

Green Room

Basically, a room for whatever your production needs – our friends and neighbors at Martin Guitar have created a mini museum of C.F. Martin Guitar & Co. history. Measuring 16' x 57' this space is located in the SR expanded wing and has been used for catering, as a lounge, and as a wardrobe area for Broadway shows.

Orchestra Pit

The orchestra pit is in the shape of a half-moon. Musicians enter through an access door in the basement or from the house through a swinging gate in the railing. The dimensions of the pit are:

- Length 36'
- Width at center 7'-6"
- Width at stage right 4'
- Width at stage left tapers to 00"
- Depth below stage 4'-6"
- Depth below house floor 1'-3"

It is recommended that no more than 20 musicians be placed in the pit at one time. Exceeding this number will result in an angry orchestra. (The under stage crossover is often used for extra orchestra space.)

There is a railing with a black duvetyne skirting the full length of the orchestra pit.

Music stands and clip lights are available for up to 44 musicians.

Stage Deck

The stage floor is maple hardwood with a flat black finish. The floor is a bounce deck. Lagging into the stage deck is avoided at all costs; please discuss such needs with the Technical Director.

Crossover

The best provision for crossovers is behind the main black, typically hung at 28'6" (line set #31). This does not leave a great deal of room, so if you need a larger crossover there is an under-stage crossover accessible from USL and USR.

Soft Goods

The main curtain is a burnt orange crushed velour, operated as a guillotine curtain only. Operation of the main curtain is a single purchase lineset at stage level DSR. Following is our soft goods inventory. All drapes are black velour with no fullness.

- Legs: 4 pair at 10'-0" by 26'-0"
- Borders: 4 at 8'-0" by 64'-0"
- Main Black: 2 panels 26'-0" high by 33'-0" wide
- Cyclorama: white, seamless 50' X 22'
- Scrim: Black Sharks tooth 22' X 40'

House Pianos

The house piano is a black Kimball 7ft. semi-concert baby grand in excellent condition. There is also a Hyundai upright piano for the orchestra pit and a Yamaha U1. These pianos are only installed when necessary, so please inform the Technical Director of such a need. Tunings of both of these pianos will be arranged as necessary; A-440 unless otherwise informed.

House Lighting

Lighting Power

400amp – 120v, 60 Hz (3 phase) tie in or **2** sets of Camlocks w/ Ground & Neutral reverse – located DSR. *House 96 rack dimming system shares power from this box.

All connections must be made by a State Theatre provided electrician unless other arrangements have been approved by the Technical Director. *Visiting crews are responsible for metering their own power.*

There is 1 dedicated 20 amp circuit at the FOH booth.

Houselights

The house lights can be operated from the tech booth at the back of the house, or from DSR or DSL at the smoke pocket. The house lights can go to 100% black, aside from the emergency lighting required by local fire ordinances.

In-house lighting system

The house console is a **High-End Road Hog 4-21** and external **High End Playback Wing 4** with an external monitor

Instrument Inventory

LED

- (15) Elation Arena Par Zoom LED Wash lights (used as primary stage wash units)
- (6) Elation Colour 5 Profile LED Source 4's (used as FOH full stage wash from Box Boom Positions)
- (5) LED Chroma-Q Colorforce 72 (6') Cyc Lights
- Moles: (2) Elation LED Cuepix Blinder WW4

Conventional Lights

- (60) ETC Source Four Lekos
 - (23) 19 degree Source Fours – 575W
 - (25) 26 degree Source Fours – 575W
 - (12) 36 degree Source Fours – 575W
- (100) PAR 64's

- (50) Wide 1,000 watt
 - (50) Medium 1,000 watt
 - (40) Narrow 1,000 watt
 - (15) Very Narrow 1,000 watt
- (6) 16" scoops

In-house DMX Runs

We have (4) 5 pin DMX universes & 1 Cat5 ethernet run from FOH Booth to DSR.

Dimmers and Circuits

We have 96 ETC Sensor Rack dimmers all of which are 2.4K. These are located in a dimmer room accessible from the fly rail SR.

There are 130 circuits over the stage, distributed in 13 ten circuit drop boxes. Any free pipe may therefore be designated as an electric. There are 10 circuits DSR. Front of house, there are 10 circuits at each boom and 20 circuits on the balcony rail.

All circuits are run with 16/3 cable; no circuit is able to support a load of more than 1k.

Followspots

There are four follow spots at the top of the house, two at the extremes and two at center. Both positions are above balcony seating.

The **two** normally used are **Lycian Superstar 1281 LED 1000 watt**. They are located in the center, at approximately a 45 degree angle from the stage and around 100' throw. Each has one 6-color gel 6" boomerang selector.

The **two** remaining house followspots are **Lycian 1275's**. The spots are located at either extreme. The throw is approximately 100', and the angle is relatively shallow, around 40 degrees. Each has one 6-color gel 4" boomerang selector. Due to the lower position, patrons who get up during the show walk into the beam of light.

House Sound

*** It is common that shows require more advanced sound equipment. Outside vendors are available locally.**

Sound Power

Sound Power: 400amp (currently fused for 225 amps) – 120v, 60 Hz (3 phase) tie in or 1 set of Camlocks w/ Ground & Neutral reverse – located DSR.

(There is an additional and separate **100amp** service in the basement with cams in the event that more onstage power is necessary.)

There is a provision for a fifth wire, ground, direct to cold water pipe for sound power supply.

In House Capabilities

- FOH Console: Yamaha O2R96(digital)
- Monitor Mixes (from FOH) – 4(digital)
- Wedges – 4
- Available Inputs FOH – 22 mic / 4 line
- Available Outputs FOH – 8 (w/o monitor mixes)
- PA: (driven by Crown Amps)
 - (8) EAW FR159z
 - (2) EAW FR250z subs

Microphone Inventory

- Shure:
 - SM 58 (4)
 - SM 57 (4)
 - SM 81 (2)
 - Beta 98 H/C (2)
 - Beta 52 A (1)
 - LX SM 58 wireless stick
- AKG:
 - C 414 B-ULS (2)
- Sennheiser:
 - K6-ME/66 Shotguns (2)
 - ME/35 Podium Mic (2)
 - Evolution 100 wireless stick (1)
 - Evolution 100 wireless LAV (1)
- Audio Technica:

- AT 871 Boundary Mic (3)
 - AT 853 Choir Mic (2)
- Direct Boxes:
 - DB-100 (1)

Front of House

FOH consists of a **Yamaha 02R96** Digital Mixing Console with 24/8 mic/line inputs and 16 assignable outputs. Each channel features compressors, gates, delay, etc, (also assignable to output channels as well). The board also features four internal effects processors. The house is run Mono, with a Klark Tecknic DN360 dual Channel EQ feeding PA. FOH also has a Sony CD/MD player, a dual Tascam tape deck, and a Marantz Dual independent CD deck.

The house PA consists of (8) EAW FR159z two way passive cabinets containing (1) 15" Woofer and a 1" voice coil driver on 90 x45 degree horn. There are (2) EAW FR250z subwoofers with two 15" woofers apiece. Three Crown MA3600VZ amps drive these stacks, with an Ashley crossover for the subs. There is an array of Bose 802 and 102, upper, under, and box fills that can be tied into (recommended).

Four separate Monitor mixes are possible, mixed from FOH. There are two EAWSM129z and two EV passive monitor wedges.

SPL Speed Limit – 93dB (LAeq15) measured at FOH

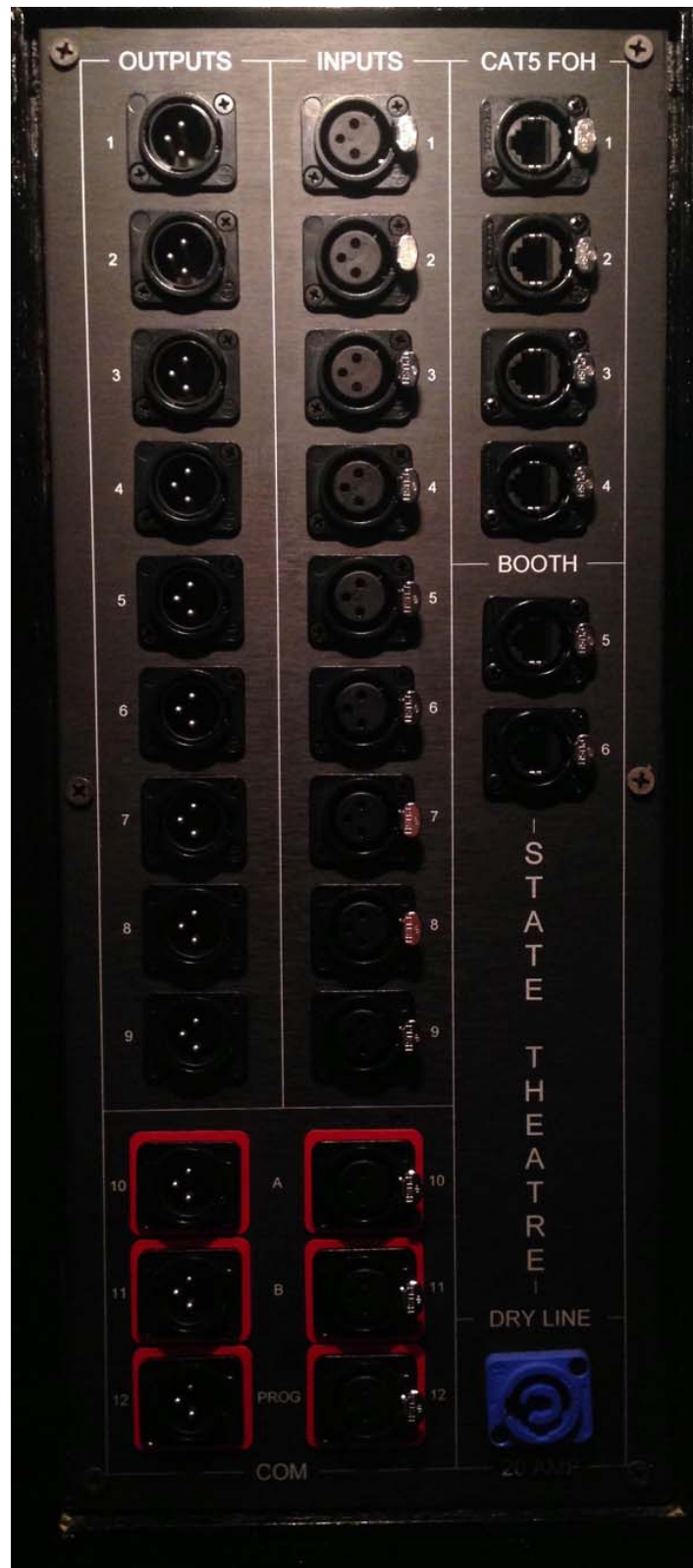
Hearing Impaired

The hearing impaired system is a Williams RF. Visiting companies are asked to provide a feed for this system from the FOH console. If this is not possible, please make the Technical Director aware of this no more than one week prior to the engagement. Shows using house sound or a house-contracted outside vendor need not worry about provisions for hearing impaired.

Intercoms

The intercom is a CS-222 two channel Clear Com Main Station with multiple A-3 dry lines run through the theatre. There are 10 single channel RS-501 belt packs and 12 headsets, for a total of 12 positions. There is also a Telex dressing room page system located FOH.

Snake Panels



Panel Down Stage Right



Panel Front of House Center

HOUSE PROJECTION

- PROJECTOR: Christie Roadster HD20k-J (20,000 Lumens)
- SCREEN: 16' W x 9' H – (front projection)
- RESOLUTION: HD, 1920 x 1080
- LENS: 4.1-6.9 HD (100' throw from spot/projection booth)

HOUSE POLICIES / SAFETY

Doors Open:

It is the Theatre's intention to open the house no later than 45 minutes prior to curtain. This policy must be strictly adhered to because of external conditions which limit how quickly the house can be filled. If for any reason the production cannot open the house at this time, this must be advanced with the local Technical Director.

Pre-show announcement and curtain speech

Before every performance, there is a taped announcement that rolls to inform the audience of policy regarding eating, drinking, smoking, photos, etc. This announcement is followed immediately by a brief curtain speech by the theatre's President & CEO. This speech is primarily to thank the evening's sponsor; during this speech the show is

typically not introduced. Any other announcements at the request of the production can be made at this time. At the end of the speech the house will be handed over to the touring management, unless the local Technical Director is calling the start of the show.

Late Seating:

Unless otherwise directed by the production company, the house manager will seat latecomers at the first round of applause and at logical breaks thereafter.

Photography – Recording - Filming:

It is normal policy of the Theatre that no photos, flash or otherwise, will be allowed. Similarly, filming and recording are also forbidden. Should patrons be found taking pictures or recording illegally, security will confiscate the recording media. If this policy differs from that of the production company, please inform the local VP of Production.

House Sound Pressure Levels:

The sound pressure level in the house is **never to exceed 95 dB “A” weighted** – measured at the mix position at the front of the house. This is due to an architectural limitation and for safety reasons must be strictly adhered to. This level will be monitored by the house sound crew.

Pyrotechnics

Any production which includes the use of flash pots, reports, fog machines, or any other pyrotechnic effect must inform the VP of Production at least two weeks prior to the show. This lead time is necessary in making the proper arrangements with the local Fire Marshall. At this time the company will be asked to provide Materials Safety Data Sheets on the chemicals being used. Any effect which requires an operator certified by the Bureau of Alcohol Tobacco and Firearms must be run by a member of the visiting staff; this person must be suitably licensed.

Fire Curtain

The house is protected by a non-asbestos, trip-type fire curtain at the plaster line. The fire curtain line must remain clear at all times.

Smoking

Smoking is strictly prohibited anywhere in the building and is subject to a fine of up to \$500 by the City of Easton.

Alcoholic Beverages

The Theatre Board of Directors prohibits the use of alcoholic beverages during any working hours. This applies to all persons working in the theatre in any capacity.

	20	26	24		22	20	18	16	14	12	10	8	6	4	2
MM	22	20	18	16	14	12	10	8	6	4	2				
LL	22	20	18	16	14	12	10	8	6	4	2				
KK	22	20	18	16	14	12	10	8	6	4	2				
JJ	22	20	18	16	14	12	10	8	6	4	2				
HH	22	20	18	16	14	12	10	8	6	4	2				
GG	22	20	18	16	14	12	10	8	6	4	2				

Balcony

NN	101	102	103	104	105	106	107	108	109	110	111	112	113	114
MM	101	102	103	104	105	106	107	108	109	110	111	112	113	
LL	101	102	103	104	105	106	107	108	109	110	111	112	113	114
KK	101	102	103	104	105	106	107	108	109	110	111	112	113	114
JJ	101	102	103	104	105	106	107	108	109	110	111	112	113	
HH	101	102	103	104	105	106	107	108	109	110	111	112	113	114
GG	101	102	103	104	105	106	107	108	109	110	111	112	113	

1	3	5	7	9	11	13	15	17	19	21	MM	23	25	27
1	3	5	7	9	11	13	15	17	19	21	LL			
1	3	5	7	9	11	13	15	17	19	21	KK			
1	3	5	7	9	11	13	15	17	19	21	JJ			
1	3	5	7	9	11	13	15	17	19	21	HH			
1	3	5	7	9	11	13	15	17	19	21	GG			

Loge

FF	28	25	24	22	20	18	16	14	12	10	8	6	4	2
EE	28	25	24	22	20	18	16	14	12	10	8	6	4	2
DD	28	25	24	22	20	18	16	14	12	10	8	6	4	2
CC	28	25	24	22	20	18	16	14	12	10	8	6	4	2
BB	28	25	24	22	20	18	16	14	12	10	8	6	4	2
AA	28	25	24	22	20	18	16	14	12	10	8	6	4	2

FF	101	102	103	104	105	106	107	108	109	110	111	112	113	114
EE	101	102	103	104	105	106	107	108	109	110	111	112	113	114
DD	101	102	103	104	105	106	107	108	109	110	111	112	113	114
CC	101	102	103	104	105	106	107	108	109	110	111	112	113	114
BB	101	102	103	104	105	106	107	108	109	110	111	112	113	114
AA	101	102	103	104	105	106	107	108	109	110	111	112	113	114

1	3	5	7	9	11	13	15	17	19	21	23	25	27	FF
1	3	5	7	9	11	13	15	17	19	21	23	25	27	EE
1	3	5	7	9	11	13	15	17	19	21	23	25	27	DD
1	3	5	7	9	11	13	15	17	19	21	23	25	27	CC
1	3	5	7	9	11	13	15	17	19	21	23	25	27	BB
1	3	5	7	9	11	13	15	17	19	21	23	25	27	AA

Right


ZZ	26	24	22	20	18	16	14	12	10	8	6	4	2
Z	26	24	22	20	18	16	14	12	10	8	6	4	2
Y	26	24	22	20	18	16	14	12	10	8	6	4	2
X	26	24	22	20	18	16	14	12	10	8	6	4	2
W	26	24	22	20	18	16	14	12	10	8	6	4	2
V	26	24	22	20	18	16	14	12	10	8	6	4	2
U	26	24	22	20	18	16	14	12	10	8	6	4	2
T	26	24	22	20	18	16	14	12	10	8	6	4	2
S	26	24	22	20	18	16	14	12	10	8	6	4	2
R		24	22	20	18	16	14	12	10	8	6	4	2
Q				20	18	16	14	12	10	8	6	4	2

Center

ZZ	101	102	103	104	105	106	107	108	109	110	111	112	113	114
Z	101	102	103	104	105	106	107	108	109	110	111	112	113	114
Y	101	102	103	104	105	106	107	108	109	110	111	112	113	114
X	101	102	103	104	105	106	107	108	109	110	111	112	113	114
W	101	102	103	104	105	106	107	108	109	110	111	112	113	114
V	101	102	103	104	105	106	107	108	109	110	111	112	113	114
U	101	102	103	104	105	106	107	108	109	110	111	112	113	114
T	101	102	103	104	105	106	107	108	109	110	111	112	113	114
S	101	102	103	104	105	106	107	108	109	110	111	112	113	114
R	101	102	103	104	105	106	107	108	109	110	111	112	113	114
Q	101	102	103	104	105	106	107	108	109	110	111	112	113	114

Left

1	3	5	7	9	11	13	15	17	19	21	23	25	ZZ
1	3	5	7	9	11	13	15	17	19	21	23	25	Z
1	3	5	7	9	11	13	15	17	19	21	23	25	Y
1	3	5	7	9	11	13	15	17	19	21	23	25	X
1	3	5	7	9	11	13	15	17	19	21	23	25	W
1	3	5	7	9	11	13	15	17	19	21	23	25	V
1	3	5	7	9	11	13	15	17	19	21	23	25	U
1	3	5	7	9	11	13	15	17	19	21	23	25	T
1	3	5	7	9	11	13	15	17	19	21	23	25	S
1	3	5	7	9	11	13	15	17	19	21	23		R
1	3	5	7	9	11	13	15	17				Q	

P	26	24	22	20	18	16	14	12	10	8	6	4	2
O	26	24	22	20	18	16	14	12	10	8	6	4	2
N	26	24	22	20	18	16	14	12	10	8	6	4	2
M	26	24	22	20	18	16	14	12	10	8	6	4	2
L	26	24	22	20	18	16	14	12	10	8	6	4	2
K	26	24	22	20	18	16	14	12	10	8	6	4	2
J	26	24	22	20	18	16	14	12	10	8	6	4	2
H	26	24	22	20	18	16	14	12	10	8	6	4	2
G	24	22	20	18	16	14	12	10	8	6	4	2	
F	24	22	20	18	16	14	12	10	8	6	4	2	
E	24	22	20	18	16	14	12	10	8	6	4	2	
D	22	20	18	16	14	12	10	8	6	4	2		
C			20	18	16	14	12	10	8	6	4	2	
B				16	14	12	10	8	6	4	2		
A				16	14	12	10	8	6	4	2		

P	101	102	103	104	105	106	107	108	109	110	111	112	113	114
O	101	102	103	104	105	106	107	108	109	110	111	112	113	114
N	101	102	103	104	105	106	107	108	109	110	111	112	113	114
M	101	102	103	104	105	106	107	108	109	110	111	112	113	114
L	101	102	103	104	105	106	107	108	109	110	111	112	113	114
K	101	102	103	104	105	106	107	108	109	110	111	112	113	114
J	101	102	103	104	105	106	107	108	109	110	111	112	113	114
H	101	102	103	104	105	106	107	108	109	110	111	112	113	114
G	101	102	103	104	105	106	107	108	109	110	111	112	113	114
F	101	102	103	104	105	106	107	108	109	110	111	112	113	
E	101	102	103	104	105	106	107	108	109	110	111	112	113	
D	101	102	103	104	105	106	107	108	109	110	111	112		
C	101	102	103	104	105	106	107	108	109	110	111			
B	101	102	103	104	105	106	107	108	109	110				
A	101	102	103	104	105	106	107	108						

1	3	5	7	9	11	13	15	17	19	21	23	25	P
1	3	5	7	9	11	13	15	17	19	21	23	25	O
1	3	5	7	9	11	13	15	17	19	21	23	25	N
1	3	5	7	9	11	13	15	17	19	21	23	25	M
1	3	5	7	9	11	13	15	17	19	21	23	25	L
1	3	5	7	9	11	13	15	17	19	21	23	25	K
1	3	5	7	9	11	13	15	17	19	21	23	25	J
1	3	5	7	9	11	13	15	17	19	21	23	25	H
1	3	5	7	9	11	13	15	17	19	21	23		G
1	3	5	7	9	11	13	15	17	19	21	23		F
1	3	5	7	9	11	13	15	17	19	21	23		E
1	3	5	7	9	11	13	15	17	19	21			D
1	3	5	7	9	11	13	15	17	19		24		C
1	3	5	7	9	11	13	15	16	17	18	19	20	B
1	3	5	7	9	11								A

BOX SEATING
8

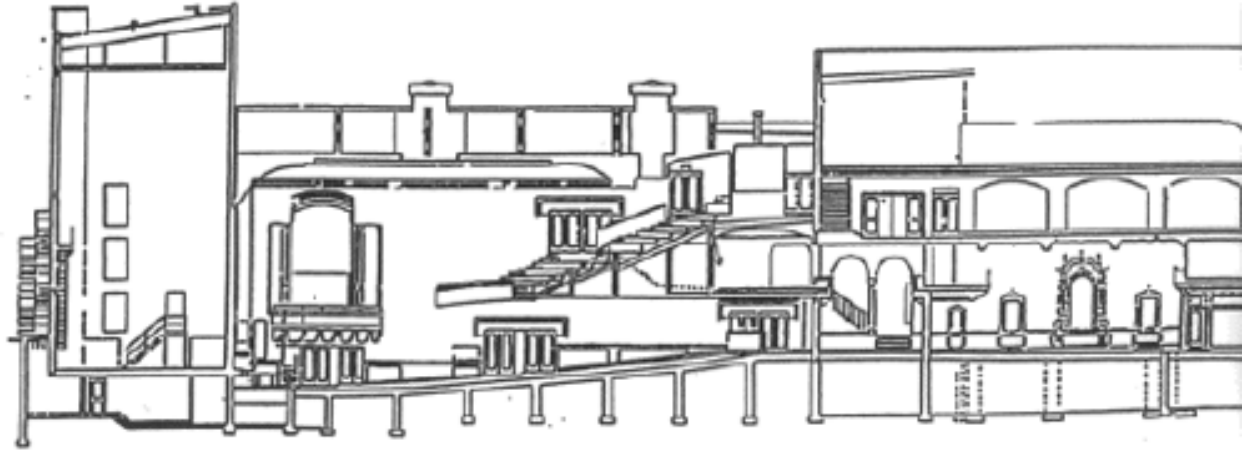
16	17	18	19	20	21	22	23	24	25	26	27	28	29	30
1	2	3	4	5	6	7	8	9	10	11	12	13	14	15

BOX SEATING
8

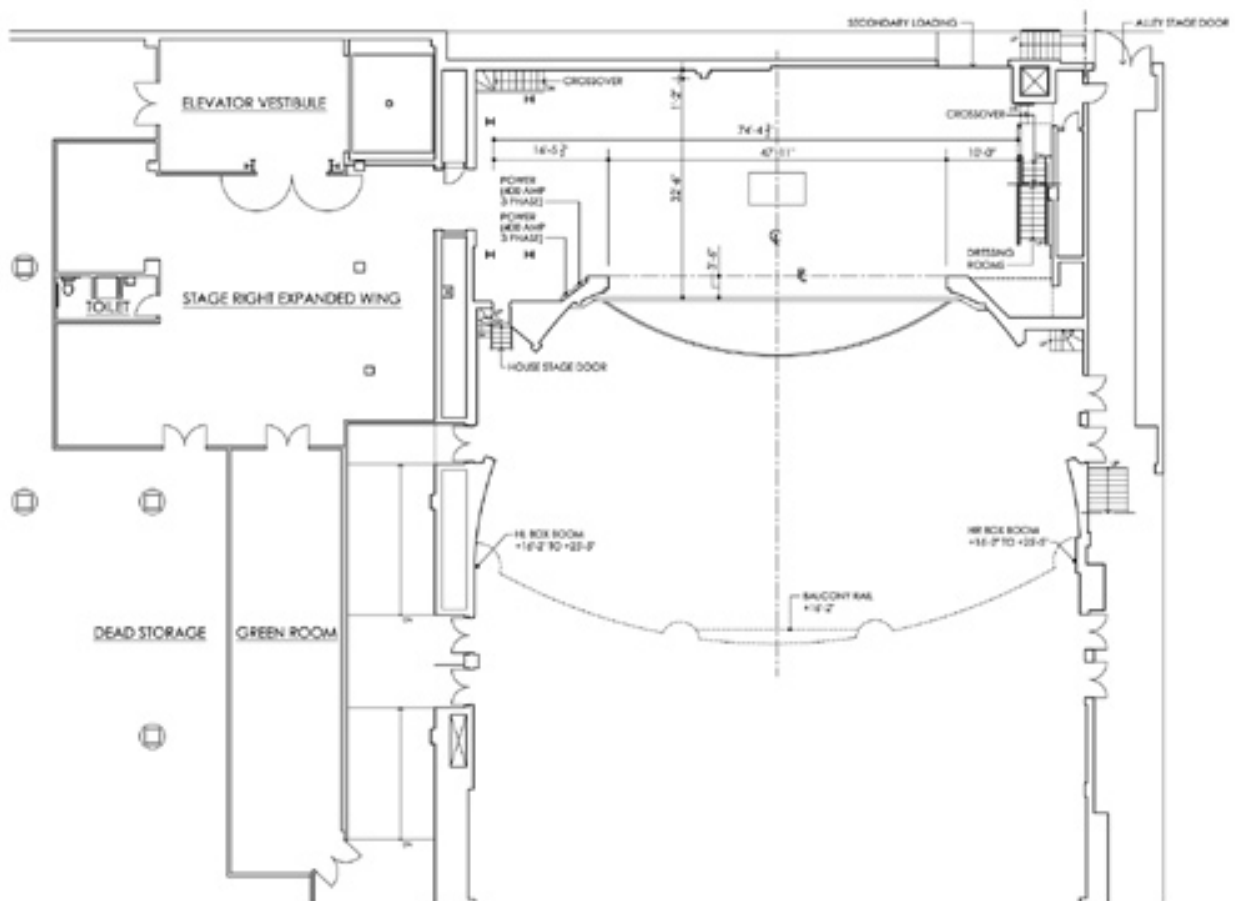
Pit

Stage

Detailed Technical Drawings



Non-Detailed Ground Plans



Theatre Background

The State Theatre Center for the Arts, located in historic downtown Easton, Pennsylvania, opened in March 1926 as a touring show theatre on the vaudeville circuit. The original architecture incorporated the Beaux Arts Style throughout and was considered to be one of the most modern and beautiful theatres in the east. In its eighty-plus year history, the State Theatre has transformed from a vaudeville house to a motion picture house then returned to its roots in early 1990 with a restoration campaign that revisited the grand style of its vaudeville days. The 1990 renovations sought to maintain the Theatre's historic décor and more recent upgrades to the production facilities intend to meet the demands of modern touring companies. Today, the State Theatre presents over 100 live performances per season. In addition to the main theatre, two other major additions include a renovated ballroom, complete with a fully outfitted caterer's kitchen, adjoining art gallery, and the Martin Guitar Greenroom.